

A strengthening yen? Not if the MoF wants to prevent it.

Psychologically, it's easier for a government to weaken rather than strengthen its currency. All it needs to do is print more of it, and then talk it down or even intervene on occasion. Lower short-term interest rates, relative to other currencies, also make it less attractive to hold. In theory, it ought to be no more difficult to strengthen a currency, with the central bank sterilising excess liquidity and hiking rates, while also jawboning and actually intervening on occasion. In practice, it seldom works out that way because in markets, confidence is more easily undermined than restored. Also, raising interest rates and/or draining liquidity may not be credible alternatives if these measures jeopardise a central bank's preferred level of economic growth. Japan, where the Ministry of Finance makes the actual decision on currency intervention, has actively managed its currency in recent years. This has mainly been to weaken the yen but they have also talked it up, as we saw earlier this year. The MoF has been unusually successful in moving the yen and one factor may be the slow growth of money supply - only 3.5 percent (M2+CD) at the latest reading. With so little money actually in circulation, jawboning and/or actual intervention could have a greater market impact. In any event, the Japanese Government clearly fears a too strong yen even more than a currency that is depreciating too rapidly. This is hardly surprising given Japan's overall weak economic performance and persistent deflation. While the economy did grow 1.4 percent in 1Q 2002, ending three consecutive quarters of decline, half of this recovery came from export earnings, which are threatened by an appreciating yen. Consequently the BoJ has been instructed to intervene against the weak US dollar on four occasions in the last three weeks. Such persistence sends a strong message, which the market is beginning to reflect, mainly through a weaker yen against higher-yielding currencies, led by the Norwegian Krone and including the Australian and New Zealand dollars. Two of these have extended their overall uptrends against the yen. Others should follow their lead, at least until Japan next warns that the yen is falling too rapidly. Meanwhile, the currently in-form euro should follow their lead and is currently eroding overhead resistance.

Sterling and the US dollar have steadied near base support against the yen. I remain short yen, alternating range trading with trend-running tactics, as outlined in FM216 and earlier issues.

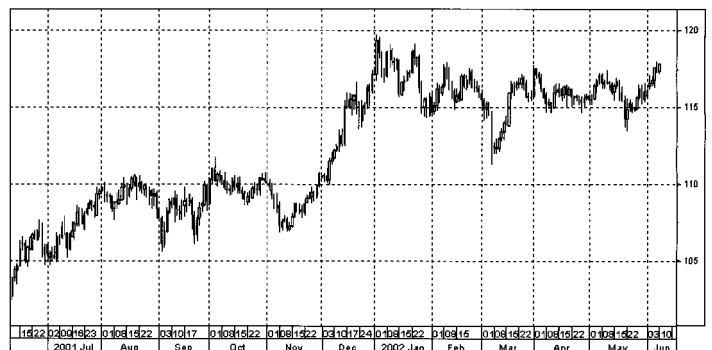
Best regards - David Fuller

Charts supplied by Bloomberg.

Norwegian Krone/Yen: 15.859 (Daily)



Euro/Yen: 117.85 (Daily)



Sterling/Yen: \$182.20 (Daily)



Fullermoney a division of Stockcube Research Limited Suite 1.21 Plaza 535 Kings Road London SW10 0SZ UK
Website: www.fullermoney.com **Email:** research@chartanalysts.com **Tel:** +44 (0) 20 7351 5751 **Fax:** +44 (0) 20 7352 3185 **Single Issue Price** £3

You are strongly advised to read the following: This report has been produced and compiled by Stockcube Research Limited ("Stockcube") which is regulated by the Securities and Futures Authority Ltd, according to the requirements of the Financial Services Act 1986. It is distributed by Stockcube and is provided for information purposes only. Under no circumstances is it to be used or considered as an offer to sell, or a solicitation of any offer to buy. While all reasonable care has been taken to ensure that the information contained herein is not untrue or misleading at the time of publication, we make no representation as to its accuracy or completeness and it should not be relied upon as such. From time to time Stockcube and any of its officers or employees may, to the extent permitted by law, have a position or otherwise be interested in any transactions, or investments (including derivatives) directly or indirectly the subject of this report. Also Stockcube may from time to time perform other services (including acting as adviser or manager) for any company mentioned in this report. The value of securities can go down as well as up, and you may not get back the full amount you originally invested. Derivatives in particular are high risk, high reward investment instruments and an investor may lose some or all of his/her original investment. If you make an investment in securities that are denominated in a currency other than that of GB Pounds you are warned that changes in rates of foreign exchange may have an adverse effect on the value, price or income of the investment. The investments referred to herein may not be suitable investments for all persons accessing these pages. You should carefully consider whether all or any of these are suitable investments for you and if in any doubt consult an independent adviser. This report is prepared solely for the information of clients of Stockcube who are expected to make their own investment decisions without reliance on this report. Neither Stockcube nor any officer of Stockcube accepts any liability whatsoever for any direct and consequential loss arising from use of this report or its contents. This report may not be reproduced, distributed or published by any recipient for any purpose without the prior express consent of Stockcube.